



ROOFING

G3 wall abutment

Specification and
installation guide



Presentation and scope of use

The G3 wall abutment is a system composed of different parts that ensures the connection and waterproofing between a wall and a VMZINC standing seam cold roof.

Attractive appearance

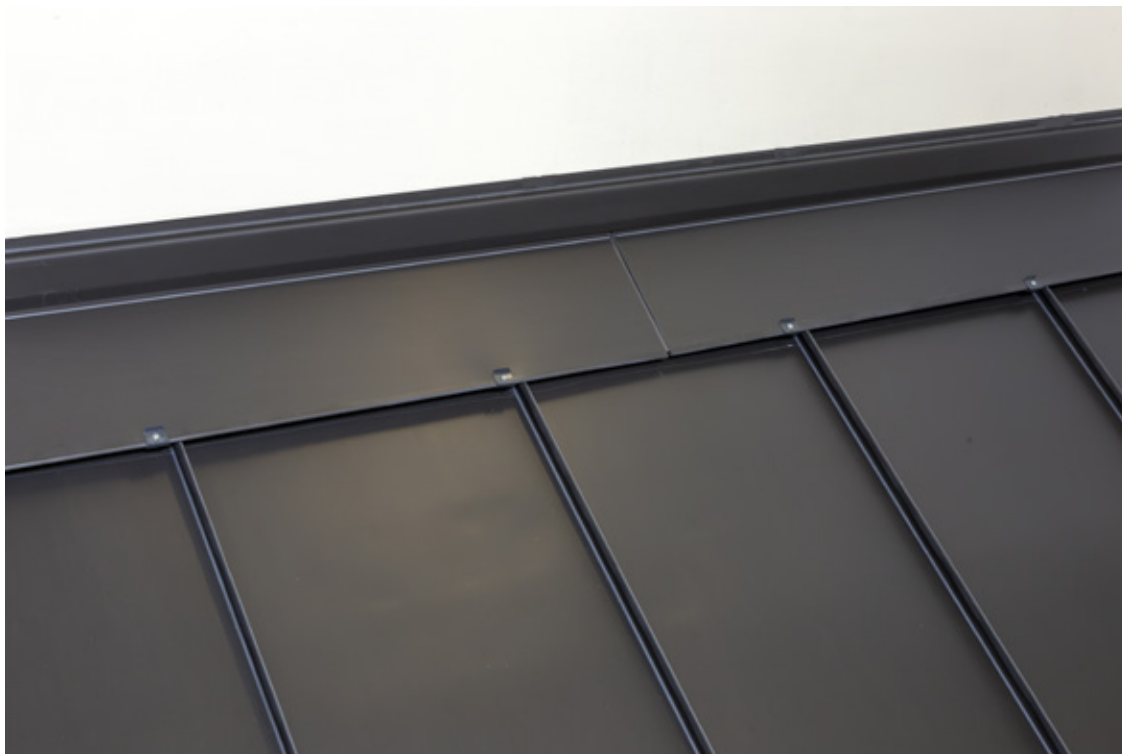
- Harmonious aesthetics
- Available in **two surface finishes** to suit your architectural projects (other finishes available on request)
- Lacquered clips for perfect visual continuity with standing seam panels

Exclusive innovation

- **Patented fixing clip** for reliable and durable performance
- G3 junction designed to combine performance and elegance

Simplified installation

- **Complete ready-to-install kit:** saves time on the building site
- **Pre-fabricated components** for quick installation and easy implementation



All these components have been tested and approved by VM Building Solutions for exclusive use with VMZINC® products. Their use with any other product is the sole responsibility of the installer.

System composition

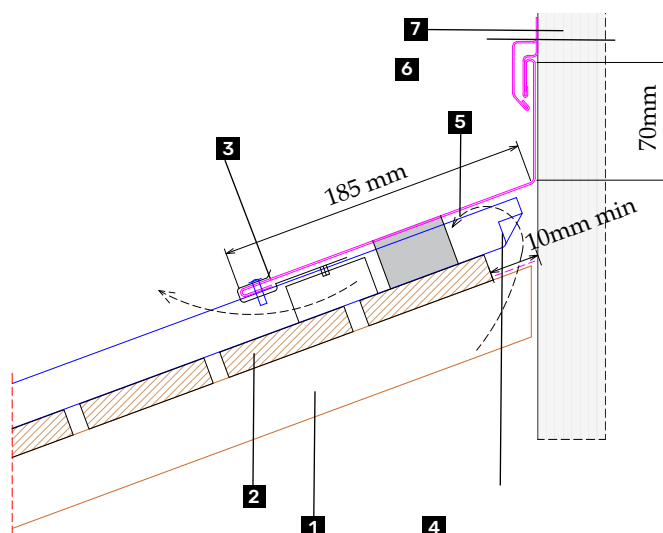
The G3 wall abutment includes 5 components.



Characteristics

	1	2	3	4	5
System components	G3 Wall abutment	Junction splice	Decompression strip	Clip	Screw + end piece
Surface finishes*	QUARTZ-ZINC® ANTHRA-ZINC®	QUARTZ-ZINC® ANTHRA-ZINC®		Grey Black	
Length	2 m	10 cm	2 m		
Thickness	1 mm	0,7 mm	4 cm		
Packaging	The G3 wall abutment is sold as a complete kit for 10 meters in length				
	5 connectors	5 splice plates	6 strips	25 clips	25 screws + end piece

*PIGMENTO® and AZENGAR® on request

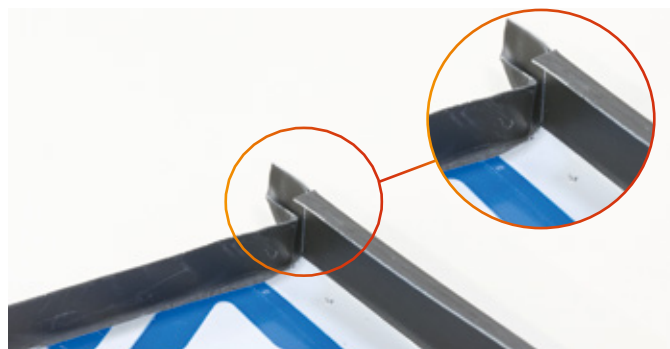


- 1** Ventilated air gap
- 2** Battens
- 3** Clip
- 4** Decompression strip
- 5** Wall abutment, pre-bent to 130°
- 6** Staple (not supplied)
- 7** Flashing strip (not supplied)

Installation

Step 1: Preparing the profiles: folding and shaping

- > Mark a **15 mm** line at the top of the panel.
- > Raise the top of each panel by 90° to a height of 15 mm. Do not exceed this height, as this may block ventilation.
- > The angles formed by the meeting of the side edges and the G3 abutment relief are formed into a mitre joint. They can be folded behind the raised top, if required for ease of installation.



NB : For further information on installing VMZINC® standing seam roofing, refer to the VMZINC® roofing contractor's handbook or the VMZINC® standing seam roofing guide.

Step 2: Position the VMZINC® standing seam panels

For ventilated roofs: leave a ventilation gap (minimum 10 mm) at the top of the slope. Perform double crimping: mandatory for roofing.



NB : For faster installation of the clips, do not crimp the seam too tightly at the wall ridge.

Installation

Step 3: Angle of the G3 abutment

Ensure that the angle of the G3 abutment (pre-bent at 130°) complies with the roof slope.

Position the G3 clips

- > Mark a pencil line on the standing seam at the edge of the G3 connector.
- > Remove the film to below the mark.
- > Allow a few extra centimetres below.
- > Mark the location of the clips on the standing seam.
- > Position and adjust the clips, with the lower part of the clip at the mark.
- > Insert the clip into the standing seam without opening the seam. The clip inserts itself; there is no need to press it against the VMZINC® standing seam. If necessary, adjust the position of the clip up or down by sliding it with a mallet. Be careful not to rotate it.
- > Re-crimp the clips.



Installation

Step 4: Stick on the decompression strip

The self-adhesive decompression strip ensures watertightness and ventilation.



NB : Use complete strips of the correct width rather than multiple strips cut to size.

Step 5: Position the junction splices

- > Leave a 5 mm gap between two joints on the wall.
- > Position the junction splice between the two joints.
- > Slide it under the joints.
- > Bring the upper part back into place using a mallet.

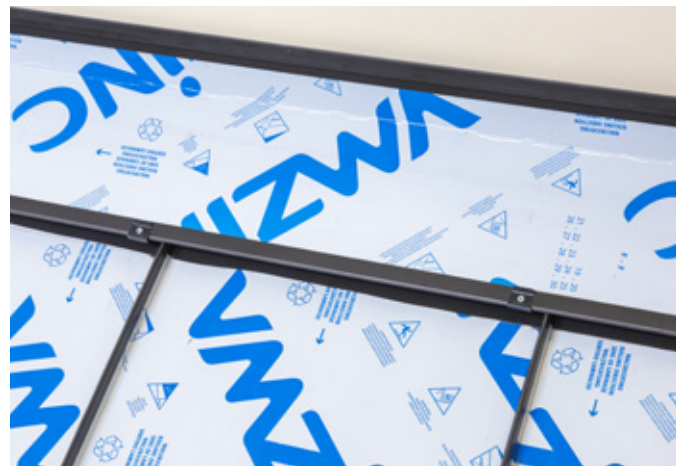


Info : The splice will also ensure watertightness.

Installation

Step 6: Secure the connector to the wall G3

Install the G3 wall abutment by inserting it into the clips. Secure it firmly using an SPS 3-7.1-4.5 x 18 mm stainless steel screw from SFS or equivalent.



Tip

Design a shoehorn-type tool to facilitate fitting the wall abutment.

1. Press the ridge firmly against the wall.
2. Snap the ridge cap onto the clips.
3. Adjust the position of the clips using a mallet.
Screw the clips into place.



Installation

Step 7: Flashing strip

Position and place the VMZINC® bevelled flashing strip on the G3 wall abutment.

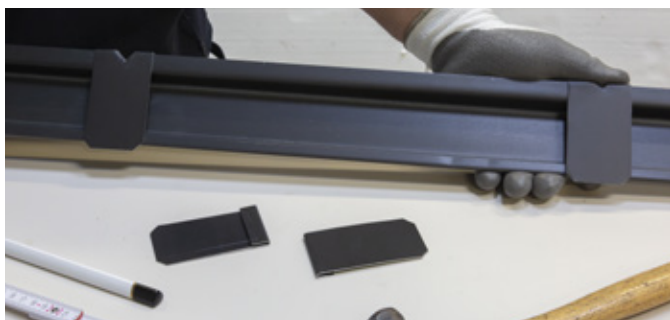


Tip

Save time when installing flashing: clip tabs

1. Prepare the clip tabs.
2. Position them at the back of the flashing.
3. Make a notch approximately every 50 cm.

- > **To help the cement adhere better:**
make notches along the entire length of the flashing.
- > **For added security:**
Fold down the notches using a rolling motion.



Protective film and removal

Our surface finishes are protected by a peelable film that can remain on the zinc for up to 2 months after installation. This protective film, which helps to limit fingerprints, scratches and cuts as well as contamination from gloves or products that are aggressive to zinc, must not remain in place for more than 2 months. The film must be removed in one smooth motion. It must not be left partially peeled and shredded on the zinc, as this may leave marks.

For any work carried out after the film has been removed, all necessary precautions must be taken to protect the surface appearance. The use of adhesives is not recommended. Avoid contact with greasy substances.

Object

This document is intended for specifiers (architects and project managers responsible for the design of structures) and users (companies responsible for installation) of the designated product or system. Its purpose is to provide the main information, texts and diagrams specific to the specification and installation of the said product or system: presentation, field of use, description of components, installation (including installation supports), treatment of finishes.

Any use or specification outside the scope of application indicated and/or the specifications in this guide requires specific consultation with the technical services of VM Building Solutions®, without the latter being held liable for the feasibility of the design or installation of such projects.

Territory of application

This document applies to the installation of the designated product or system for construction sites located in your country.

Qualifications and reference documents

We remind you that the specification of complete construction systems for a given structure remains the exclusive responsibility of building contractors, who must ensure that the products specified are suitable for the construction purpose of the structure and compatible with the other products and techniques used.

It should be noted that the proper use of this guide presupposes knowledge of zinc as a material and of the roofing and facade construction trade.

Liability

VM Building Solutions® cannot be held liable for any damage resulting from specifications or installation that do not comply with all VM Building Solutions® specifications, as well as the aforementioned standards and practices.